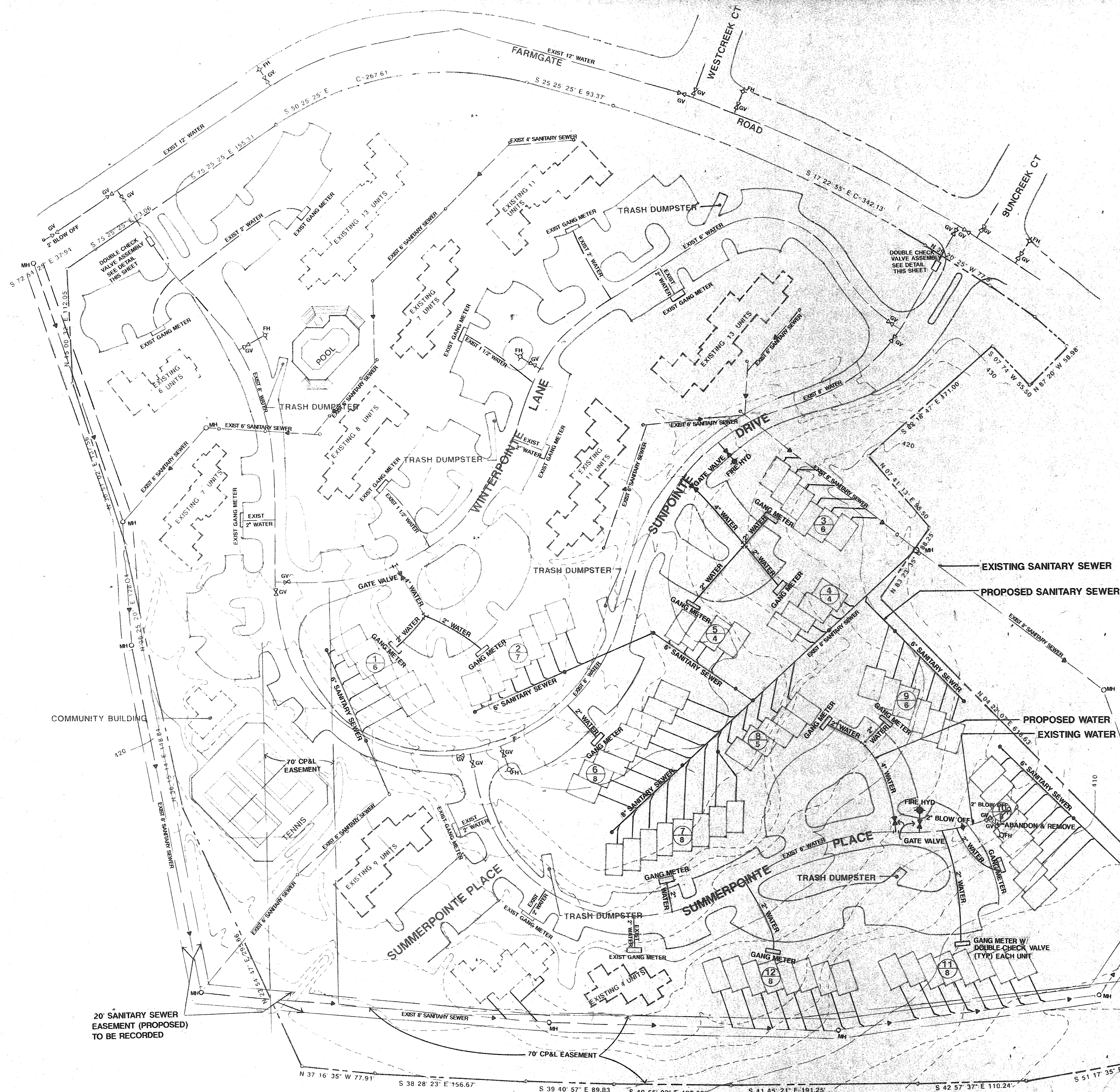


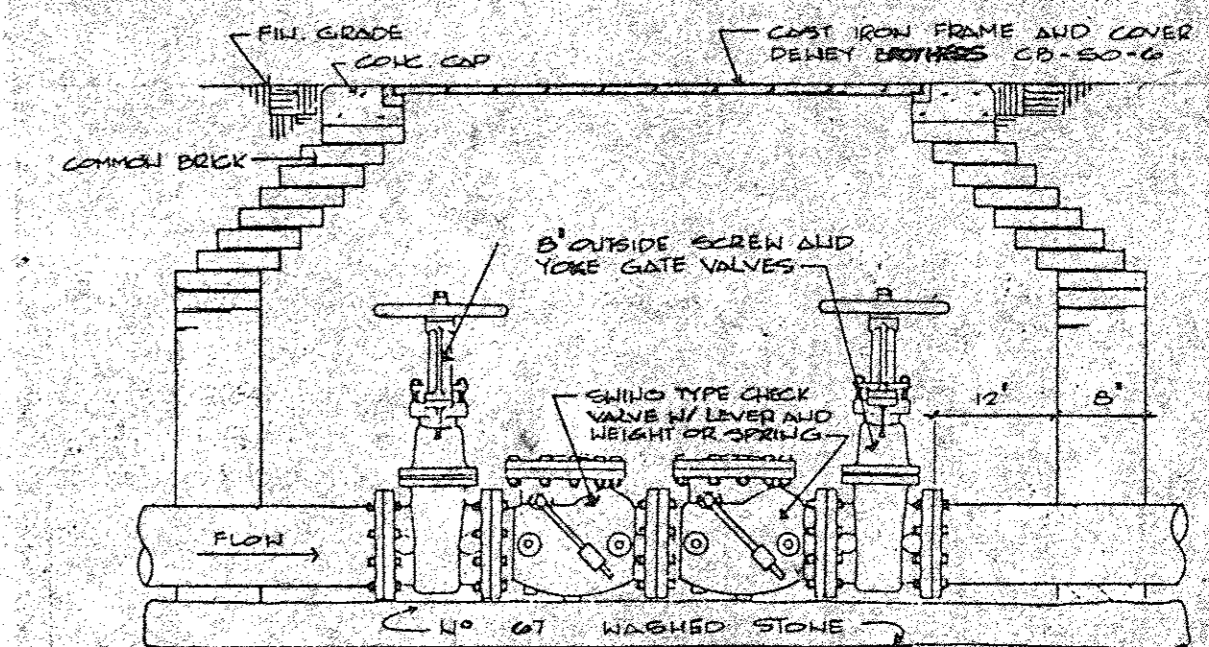
SUN POINTE

CONDOMINIUMS
PHASE II
RALEIGH, NORTH CAROLINA



NOTES:

1. ALL WATER AND SANITARY SEWER WILL REQUIRE PERMITTING BY THE PUBLIC UTILITIES DEPARTMENT PRIOR TO CONSTRUCTION.
2. EXISTING DOUBLE CHECK VALVE ASSEMBLY SHALL BE CHECKED TO CONFIRM MARK AND MODEL NO., IF NOT IN ACCORDANCE WITH CITY OF RALEIGH STANDARDS, ASSEMBLY SHALL BE BROUGHT INTO COMPLIANCE.
3. ALL DEVICES SHALL BE INSTALLED BY A PLUMBING CONTRACTOR CERTIFIED BY THE CITY OF RALEIGH.
4. ALL UNITS SHALL BE EQUIPPED WITH DOUBLE CHECK VALVE DEVICES AT METERS.
5. NO BUILDINGS SHALL ENCRUCH ON EXISTING 20' SANITARY SEWER EASEMENTS.

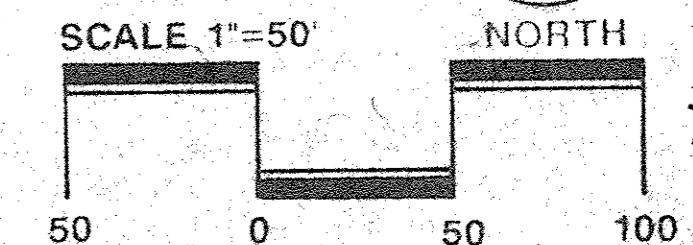
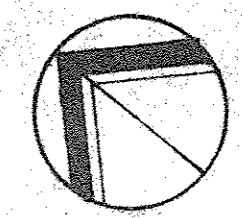


**EXISTING 8" DOUBLE CHECK VALVE ASSEMBLY AT FARMGATE ROAD
N.T.S.**

EXISTING DOUBLE CHECK VALVES TO BE BROUGHT INTO COMPLIANCE
PER CITY OF RALEIGH STANDARDS

Ford Design

DATE	MAY 1, 1990
PROJECT NO.	90578
REVISIONS	
5.21.90	REVISED PER CITY COMMENTS 5.15.90
5.31.90	REVISED PER CITY COMMENTS 5.25.90
6.15.90	REVISED SITE PLAN



179 East Boulevard, Charlotte, NC 28203
1216 Park Street, Asheville, VA 22314
225 Hillsborough Street, Raleigh, NC 27603

Land Design
Landscape Architecture Land Planning
Urban Design Civil Engineering