

# SUN POINTE

CONDOMINIUMS  
PHASE II  
RALEIGH, NORTH CAROLINA

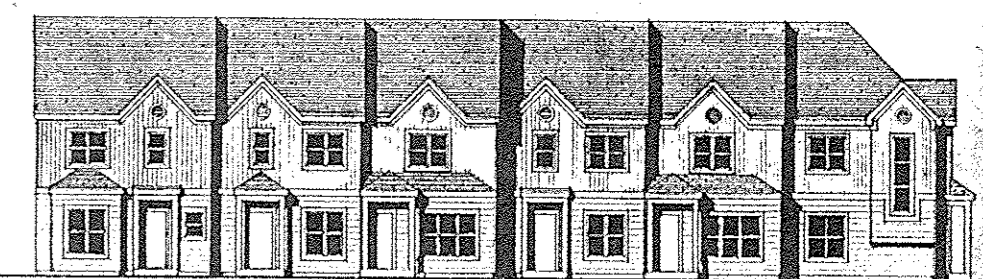
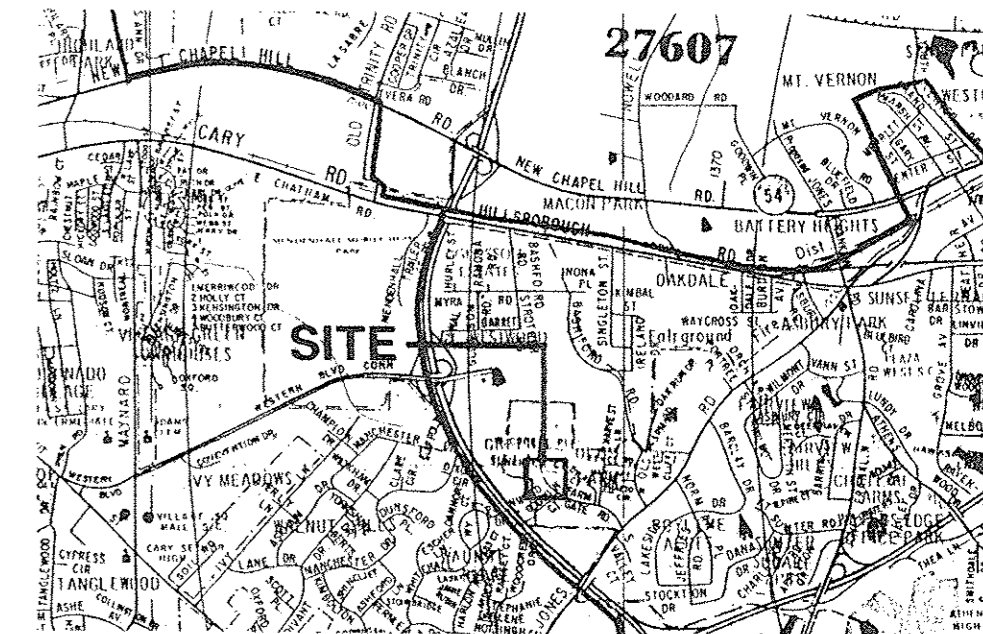
## SITE DATA

SITE ZONING CLASSIFICATION	R-10
TOTAL PROPOSED VEHICULAR SURFACE AREA +/-	58,500 SQ. FT.
MINIMUM BUILDING SETBACK	30'
OPEN SPACE REQUIREMENT	1.89 AC. (OVERALL SITE)
EXISTING UNITS	89 (2 AND 3 BEDROOMS)
EXISTING PARKING	217 SPACES
EXISTING PARKING REQUIRED	178 SPACES
PROPOSED UNITS	84
- TOTAL 2BR	64 UNITS
- TOTAL 3BR	20 UNITS
PROPOSED NEW PARKING	166 SPACES (SEE TOTAL SITE DATA)
REQUIRED PARKING	178 SPACES
PROPOSED HANDICAP PARKING	4 SPACES
TOTAL SITE DATA (EXISTING & PROPOSED)	
TOTAL UNITS	167
EXISTING PARKING DELETED	7 SPACES
TOTAL PARKING PROVIDED	383 SPACES
TOTAL PARKING REQUIRED	344 SPACES

## LANDSCAPE REQUIREMENTS

VEHICULAR SURFACE AREAS	
TOTAL PROPOSED VEHICULAR SURFACE AREA +/-	58,500 SQ. FT.
SHADE TREES (2" CAL. MIN.)	30
(1 PER 2000 S.F. SURFACE AREA)	
SHRUBS (18" HIGH MIN.)	117
(1 PER 500 S.F. SURFACE AREA)	
PLANTING AREA	300 S.F. MIN.
ALL LANDSCAPING SHALL MEET OR EXCEED THE MINIMUM REQUIREMENTS OF THE CITY OF RALEIGH LANDSCAPE ORDINANCE.	

## VICINITY MAP



## BUILDING ELEVATION

\* SEE DRAWINGS BY NEW TRADITION ARCHITECTURE FOR BUILDING INFORMATION

## SITE PLAN

DEVELOPMENT DATA LANDSCAPING

DATE MAY 1, 1990  
PROJECT NO. 90578  
REVISIONS:  
5-21-90 REVISED PER CITY COMMENTS  
5-15-90  
5-31-90 REVISED PER CITY COMMENTS  
5-25-90  
JUNE 15, 1990 REVISED PER SITE PLAN MODIFICATION

© 1701 East Boulevard, Charlotte, NC 28203 704/333-0326  
© 1216 Prince Street, Alexandria, VA 22314 703/549-7784  
© 225 Hillsborough Street, Raleigh, NC 919/834-8127

**Land Design**  
Landscape Architecture Land Planning  
Urban Design Civil Engineering

SHEET NO. 1 OF 3

