

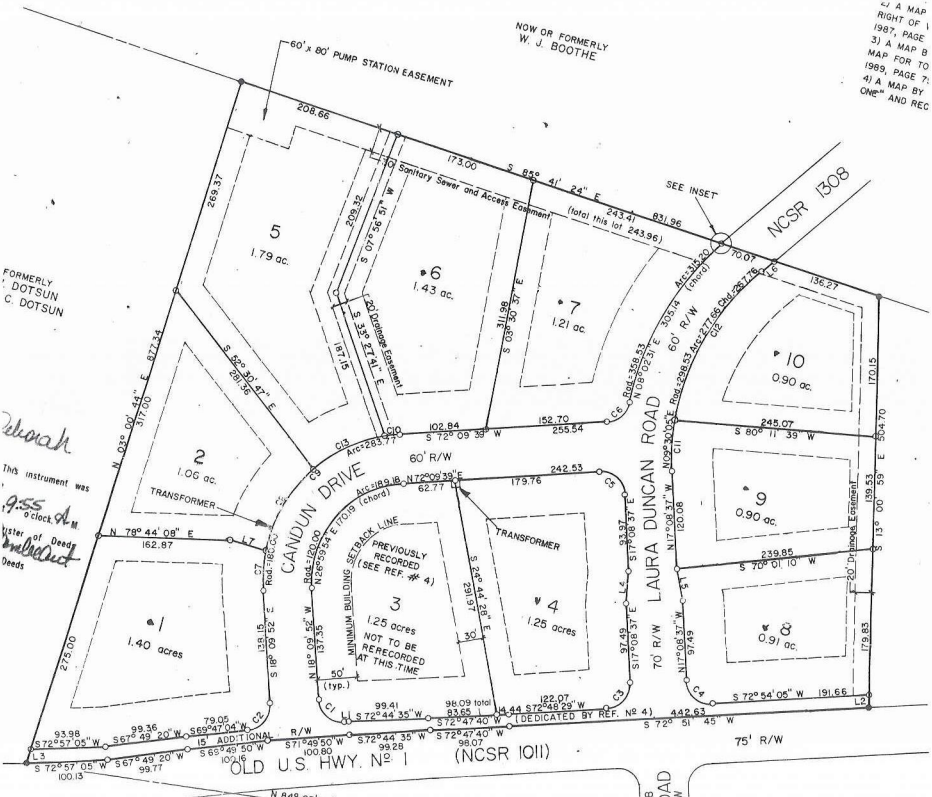
4) A MAP
 RIGHT OF 1
 1987, PAGE
 3) A MAP B
 MAP FOR TO
 1989, PAGE 7;
 4) A MAP BY
 One" AND REC

NOW OR FORMERLY
 W. J. BOOTHE

60' x 80' PUMP STATION EASEMENT

FORMERLY
 DOTSUN
 C. DOTSUN

Deborah
 This instrument was
 9:55
 o'clock A.M.
 Master of Deeds
Deborah
 Deeds



OLD U.S. HWY. NO. 1 (NCSR 1011)

75' R/W

B
 JAD
 W